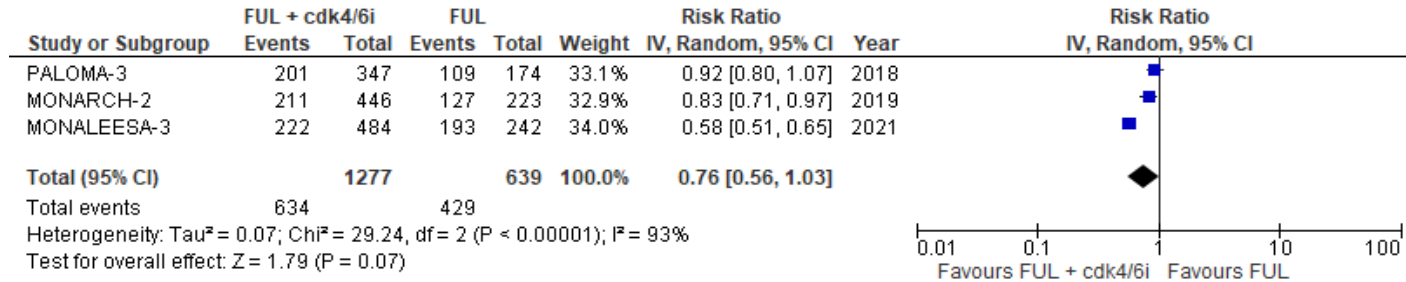


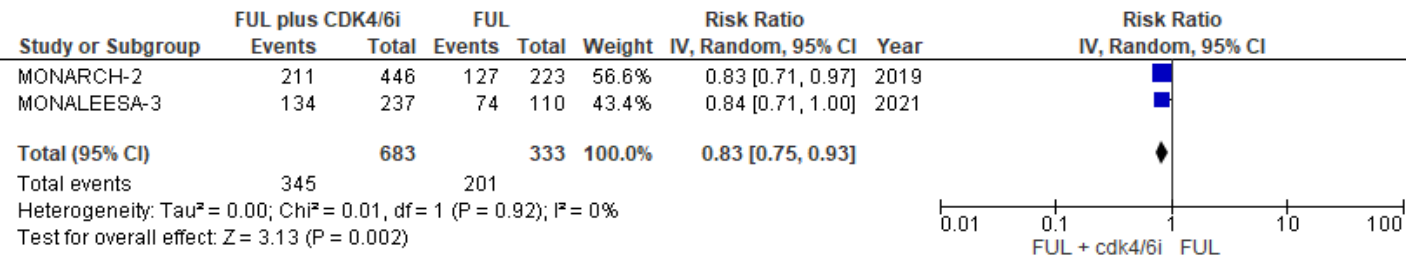
コメント(該当するセルに記入)

Pubmed ID			メタアナリシスで一貫する値が高かったため	ほかの研究とことなり、大きな試験の結果を含まないため			OS採用論文	OS 2ndline +1次採用論文	OS閉経後解析採用論文	PFS ITT採用論文	PFS 2nd line以降採用論文	PFS閉経後解析採用論文	Toxicity採用論文	CBR解析採用論文	ORR解析採用論文			
PALOMA-3 2015, 26030518													●					
PALOMA-3, 2016, 26947331										●	●	●		●	●			
PALOMA-3, 2018, 30345905							●		●									
MONALEESA-3, 2018, 29860922														●	●			
MONALEESA-3, 2020, 31826360								●	●	●	●	●						
MONALEESA-3, 2021, 34102253							●											
MONARCH-2, 2017, 28580882														●	●			
MONARCH-2, 2019, 31563959							●	●	●	●	●	●	●					

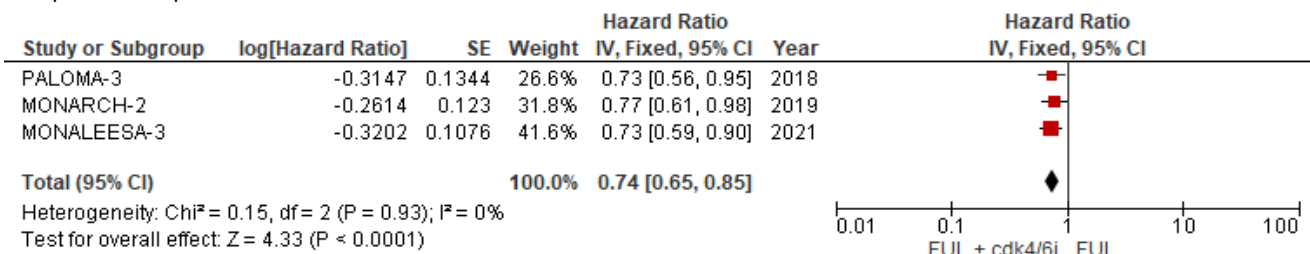
OS



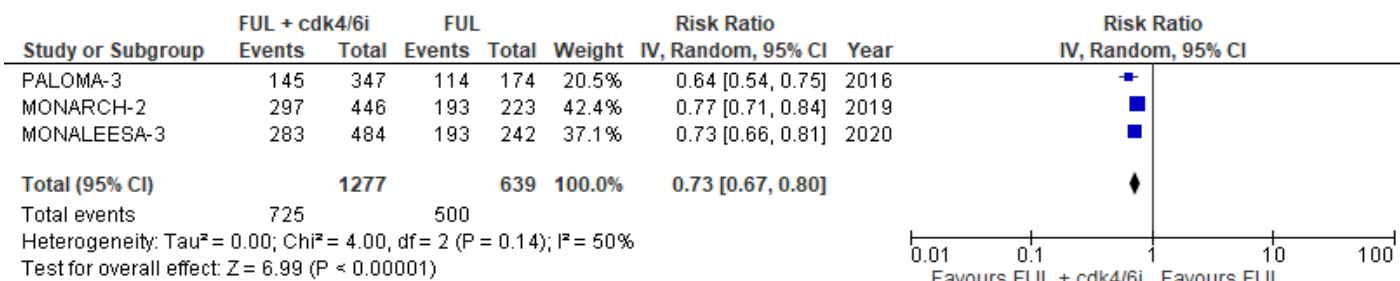
OS 2nd line



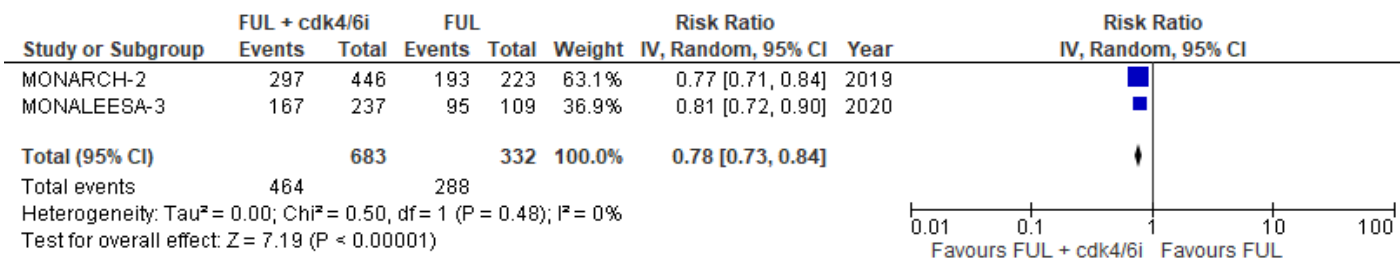
OS post menopausalのみ



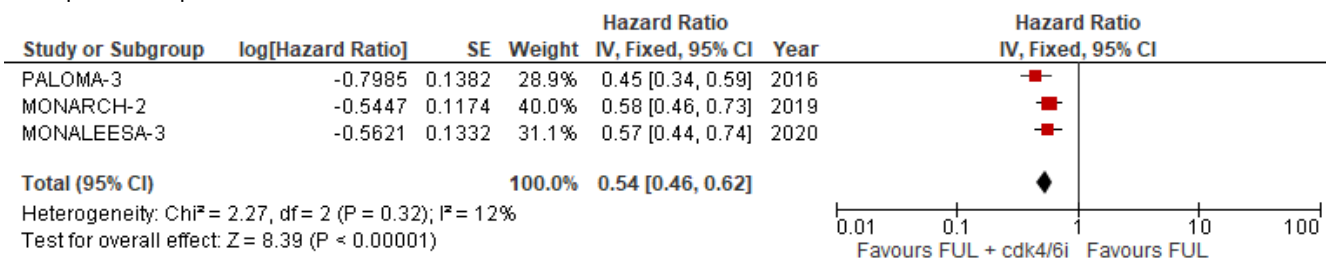
PFS ITT



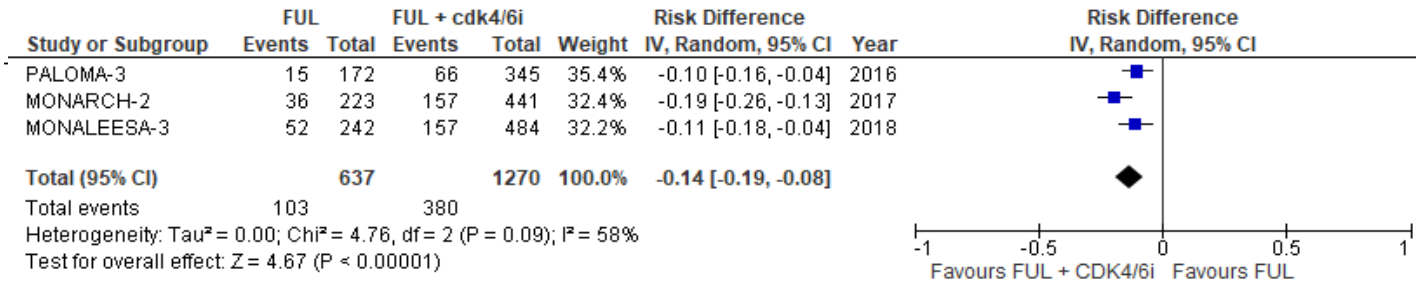
PFS 2nd line



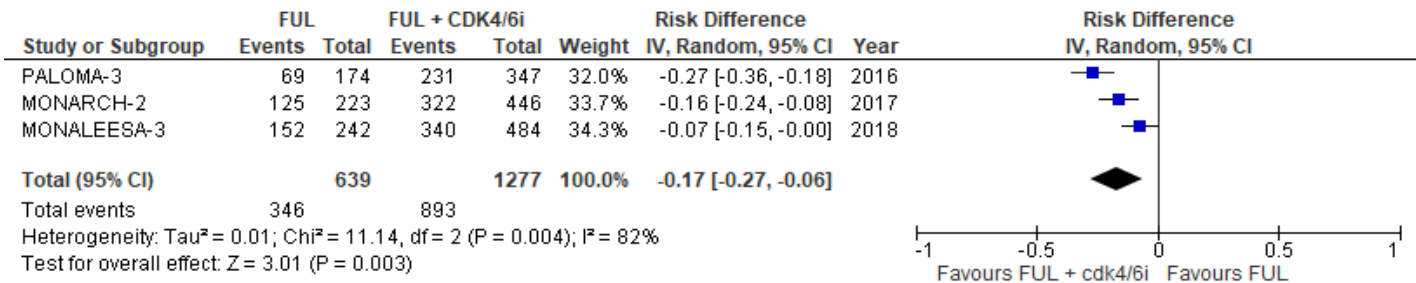
PFS postmenopausalのみ



ORR



CBR



AE G3/4

